



# WERSI

Distributed by MUSICSTORE



## WERSI SONIC

SONIC / PRODUCT INFORMATION & FEATURES

0800 084 2013

# SONIC





# WERSI

Distributed by **MUSICSTORE**

# SONIC

## INTRODUCTION

WERSI has been pioneering the development of electronic keyboard instruments for the last 45 years, for instance developing the first instrument with MIDI-implementation (1982 WERSI-Alpha), the first instrument with a touch-screen (1992 – the WERSI-Pegasus arranger keyboard) or the first PC-based instrument (1999 - WERSI- OAS instrument series). The Introduction of the OAS instrument series also marked a paradigm change in marketing, including the promise to keep an electronic instrument up to date (to the latest musical and software innovations) for much more than a decade.

This promise and philosophy been fulfilled as the OAS instrument product range is now into its 15th year of existence. Many of these OAS instruments purchased in the early years of the millennium are still in use and boast the latest technical features available on the latest models off of the production line. There have been 6 major software-versions including the stunning number of 187 software-releases over these years, each improving or extending the features of the instrument, of which only 3 had an attended charge.

Now, WERSI has designed a new generation of instruments. WERSI are proud to present the new WERSI Sonic – the first instrument of the new OAX – series. As with the OAS-series before, there is the promise of keeping up to the latest technical and musical innovations for many years to come by way of software-upgrades and extensions, although on a whole new advanced level as with OAS. It's safe to say, that OAX sets a new standard for electronic keyboard instruments of the 21st century.



## A NEW WORLD OF MUSIC

The new Sonic ensures that music making is easy. New controls, realtime sliders, drawbars and interactive push buttons are all standard on the new Sonic. Naturally, these controls are user-programmable too.

## ONE TOUCH PLAY

The new Sonic features One Touch Settings. Regardless of your playing ability, you can sound with professional registrations, created by professional musicians.



## EASY CONTROLS!

The layout of the new Sonic is both logical and always with the player in mind. Easy to use controls means that making your music and arrangements great, is simple and user friendly.





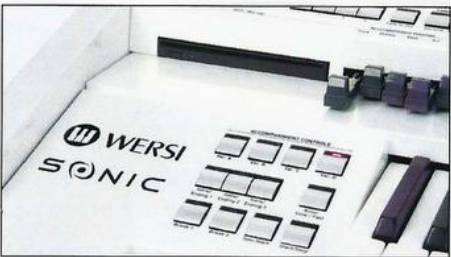
The WERSI Sonic can be played in an 'Easy Mode' or a 'Professional' mode.



Advanced, but easy to use features that are accessed via the new state of the art touch display make the Sonic a wonder!



Cool graphical presentations make creating the perfect setting so easy, while having complete control over the small details!



## WHAT IS THE NEW SONIC?

The new Sonic is an advanced and highly versatile keyboard instrument. It can be used as:

### - Electronic Organ

- Real Drawbars
- 2 different drawbar-organ sound-generators with Leslie-, vibrato-, percussion emulation (extendable)
- 61 and 76 key manuals and 17 note pedal
- more than 1000 sample-based sounds (Pianos, Strings, Orchestra, Reed, Brass, Church, Theater, ...) up to 16-fold timbres, up to 1024 voices (extendable)

### - Arranger Keyboard

- More than 1400 sample-based, analog, FM and drawbar sounds, fully editable for registration on up to 16 manual channels
- Style player-arranger with 8 + 4 MIDI-tracks, real-audio track, 10 selectable harmony-recognition modes, harmony recognition quantization, ...
- 350 factory styles, including 130 styles with Real-Audio tracks (completely extendable)
- 60 factory drum-sets (fully editable)
- MIDI-player, Multimedia-player

### - Music Workstation / Synthesizer

- More than 1400 sample-based, analog, FM and drawbar sounds, fully editable for registration on up to 16 manual channels
- Each sound with up to 64 layers (samples, analog, FM, wavetable, effects, drawbars each with 32 voices) fully editable, more than 50 inline effects
- More than 200 sound-parameters assignable to physical panel-controls
- Panel controls completely customizable
- Can load, manage and route up to 64 VST-Plugins (32/64 bit VST standard 1-3)
- Windows 8 based, ASIO multi-client
- Versatile MIDI implementation 2 x MIDI In/Out/Trough, External MIDI to USBconnection, 2 x Internal MIDI-ports

### - Compact Recording Studio

- Recording, mixing, mastering, publishing tools on board
- Possibility to load up to 64 additional VST instrument / effect / mixing/mastering plugins and to freely route the audio-signals between them all.
- Studio-quality I/O-hardware
- Record to hard disc and USB
- Audio CD Creator

## ADVANCED HARDWARE

The new Sonic is an advanced and highly versatile keyboard instrument. It can be used as:

### - PC Hardware and Connections

- i7 Quad-Core CPU (4th generation – 4 x 3,5 GHz – 3,9 GHz turbo-boost)
- 8GB DDR3 RAM
- 256 GB SATA-3 SSD
- Slot-In Blue Ray drive
- 4 x USB 3, 6 x USB 2, LAN, VGA, DVI, HDMI

### - Audio / MIDI Hardware and Connections

- Audio-interface with studio-quality ADCs
- 2 stereo external outputs
- 1 x stereo external input, 1 x stereo internal input
- 1 Microphone in (with phantom power – connectable) and studio-quality pre-amp.
- 2 x MIDI In/Out/Through, 1 x MIDI over USB, 2 x MIDI internal.
- HP-out

### - Display

- 13 inch 'Multi-Touch Display', 1376x768 pixel
- 9 Drawbars, 120 buttons, modulation, pitch, 5 backlit footswitch pistons (programmable), expression pedal with 2 programmable footswitches

### - Manuals / Pedal

- 61 key upper, 76 key lower, weighted manuals with both touch sensitivity and aftertouch.
- 17 note pedal board



---

## MUSICAL CONTENT

---

The Sonic and new OAX series features only the best and most advanced Musical Content. We'd like to tell you a little bit about just how good our new instrument is. Whether it's the most beautiful and realistic sounds, or the best accompaniment Audio Style that you want, the Sonic takes all concepts to a new level for the 21st century!

The Sonic features some 12 Sound Engines as well as two fantastic Drawbar VSTi systems that can replicate both the Hammond B3 and also all famous WERSI organs from yesterday, featuring the famous 11th Drawbar tool!

Drawbars combined with the highest quality solo, orchestral, brass and wood wind sounds make for the most incredible sound possibilities at your very fingers! Add in the real synthesizer inside of the WERSI Sonic and new OAX system, you have a system that is unbeatable!

Let us now tell you a little bit more about the musical content and features of the Sonic.

---

## SOUNDS

---

- More than 800 sample-based factory sounds – to be extended in further software versions
- More than 500 analog, FM, and wavetable sounds
- More than 100 drawbar sounds
- Up to 640 sample based user sounds (samples in various file-formats loadable)
- Up to 400 user drawbar-sounds
- Up to 400 user analog, FM, and wavetable sounds
- Up to 64000 VSTi sounds manageable in the underlying relational database
- Total number of voices (polyphony): Virtually unlimited (limited only by available RAM-size and CPU-power)

---

## ARRANGER-STYLES

---

- Styles with up to 8 tracks, 4 main-variations, 4 fill-ins, 2 breaks, 3 intros, 3 endings
- Various other style-formats loadable (up to 5000 user styles)
- 170 standard factory styles
- 50 standard factory styles with Real-Audio track
- 60 newly created and arranged modern factory styles – to be extended in further software versions
- 70 newly created and arranged modern styles with Real-Audio tracks – to be extended in further software versions

---

## TOTAL PRESETS / SUB PRESETS

---

- 500 Factory Presets (overall registrations) – to be extended in further software versions
- More than 100 sub-presets such as velocity-keytracks, Mixer-settings, panel-settings, etc.
- Up to 20000 user presets





# SOUNDS

Let us now tell you the full details about our sounds and sound technology:

- **Sound Engine**
  - 12 Factory Sound Engines (to be extended in further software versions)
  - Up to 64 VSTi –user sound generators loadable
- **Main Manual Sound Engine**
  - Up to 16 timbres (assignable to different MIDI-channels or manual ranges)
  - Each sound with up to 64 layers (sample, analog, FM, wavetable, effect, drawbar), each layer up to 32 voices and 256 single parameters fully controllable/editable
- **Main Manual Drum Sound Engine**
  - Up to 8 timbres (assignable to different MIDI-channels or manual ranges)
  - Each drumset with up to 128 drum samples and/or effects each layer up to 32 voices 256 single parameters fully controllable/editable
- **First Accompaniment Sound Engine**
  - 8 + 4 timbres (arranger style tracks and phrase player tracks)
  - each sound with up to 64 layers (sample, analog, FM, wavetable, effect, drawbar), each layer up to 32 voices and 256 single parameters fully controllable/editable
- **First Acc Drum-Sound Engine**
  - Up to 3 timbres (arranger style tracks and phrase player tracks)
  - Each drumset with up to 128 drum samples and/or effects Each layer up to 32 voices 256 single parameters fully controllable/editable
- **Second Accompaniment Sound Engine**
  - Up to 3 timbres (arranger style tracks and phrase player tracks)
  - Each drumset with up to 128 drum samples and/or effects Each layer up to 32 voices 256 single parameters fully controllable/editable
- **Second Drum Acc Sound Engine**
  - Up to 8 timbres (assignable to different external MIDI-channels or MIDI-file tracks)
  - Each drumset with up to 128 drumsamples and/or effects each layer up to 32 voices 256 single parameters fully controllable/editable
- **Drawbar VSTi VB3 (3 fold for upper / lower / pedal)**
  - Virtual tonewheel organ with rotary speaker-, vibrato scanner- and tube-overdrive simulation, 9 drawbars, mainly suitable for Hammond emulation
- **Drawbar VSTi WERSI Vintage (3 fold for upper/ lower/pedal)**
  - Virtual tonewheel organ with rotary speaker-, vibrato scanner-, percussion-, reverb-, keyclick simulation, 11 drawbars for the genuine WERSI drawbar sound reproduction!
  - Able to emulate all vintage WERSI organs (e.g. Helios, Galaxis, Saturn, Spectra) and the WERSI OX7 drawbar module



- **Sound-Database**
  - Manages up to 12.000 factory sounds, up to 1.500 user sounds and up to 64.000 user VSTi sounds with import, export, rename, delete, edit and assign functions, up to 11.000 factory multi-samples and 1000 user multi-samples
  - Multiple hierarchical category- and sound-button assignment for easy and fast access to each sound
  - Freezable favorite- or last-used lists for each sound-category
  - Music-finder function with artist, title, genre and multiple tags
- **Sound Control and Edit**
  - 33 sound-select panel buttons
  - All panel drawbars assignable for live sound-controls (e.g. reverb, delay, chorus, attack, release, sustain, portamento, ...) or effects (e.g. wah-wah, distortion, overdrive, ...)
  - More than 20 graphical user interfaces for sound-editing (e.g. Sample-edit, analog-edit, LFO-edit, drawbar-edit,...)



The WERSI Sonic sounds are sourced from a fusion of 12 sound engines. Many of the exclusive new sounds for the OAX product line (WERSI Sonic) have been created with bespoke care. Vintage Neumann microphones have been used to capture detailed sound nuances of solo instruments, string instruments, brass, orchestral instruments and drums (also percussion!).

The sounds are multi-dynamic and multi-combination layered sounds. They include special articulation sound layers and more, for the most incredibly detailed sound play on the keys, pedals and also in accompaniment playback!





If you prefer to play with a full pedal board, naturally WERSI also offer the WERSI Sonic with a full 25 note pedal board and matching bench to fit the larger pedal board.

The 25 note pedal board provides you with a larger playing surface and naturally the Sonic Pedals can be 'split' and layered as you wish with the exciting WERSI sound library!

The 25 note pedal board is finished in a cool silver chrome metal. The piston and footswell volume pedal area is slightly raised by 2 inches compared to the standard sonic to accommodate the 25 note pedal board.

Naturally all new Sonic orders come complete with a large height adjustable bench in the same finish as your new Sonic. Naturally a bench is included.



WERSI offers a height adjustable bench in the same colour finish as your new Sonic. Naturally a bench is included.

Naturally, The WERSI SONIC comes complete with two high end WERSI Vocalis Speakers. Choose between either White or Black, to match your Sonic.

The speakers feature high end audio output, including 4 impressive speakers and a ribbon driven horn. The Vocalis have been specially designed for the new WERSI product line, including the new Sonic. Audio has never been so clear before!



## ACCOMPANIMENT FEATURES

The Sonic introduces the new generation of WERSI Accompaniment and Multi-Media

### - Arranger / Style Player

- Plays up to 12 tracks + 1 real Audio track
- Up to 18 variations (4x main, 4 x fill, 2 x break, 3 x intro, 3 x ending)
- 10 different harmony-recognition modes, harmony recognition range selection independent from manual registration and harmony recognition quantization
- Each part in each track with up to 16 MIDI-pattern assignable to root notes and chordtypes
- Recognizes and processes 48 different chord- and interval types, each with every possible inversion
- Loads and plays various other style-formats

### - Style Editor

- All style-settings accessible and editable
- Track-control, MIDI-pattern control, event-edit
- Import-, export to MIDI
- Import and part-assignment of recycle files for Real-Audio tracks
- Track recording function

### - Style Database

- Manages up to 6000 arranger-styles with import, export, rename, edit and assign functions
- Multiple hierarchical category- and style-button assignment for easy and fast access to each style
- Freezable favorite- or last-used lists for each style-category
- Music-finder function with artist, title, genre, tempo and multiple tags

### - Style Control

- Volume control with up to 4 master track-controls and 13 single track controls from panel and/or display
- Part control with 11 variation buttons (3 additional assignable) with preselect function, combined select functions assignable to other panel controls
- Mute and solo function for each track (also assignable to panel controls)
- Sync-start, fade-in/out, auto-fill, auto-variation, auto-break, etc.
- Tempo-wheel & tap-tempo





---

## MIDI FILES

---

- **MIDI file player / sequencer**
  - Plays up to 16 tracks
  - Up to 18 parts assignable as loop or one-shot variations
  - Each track routeable to each factory- or user sound-engine and/or via MIDI-out to external expanders
  - Karaoke function (also assignable to external displays)
  - Note display, also possible on assigned VST, standalone, or external notation software
- **Sequence-Editor**
  - All MIDI-settings accessible and editable
  - track-control, event-edit
  - Import-, export of files, tracks, pattern
  - Track recording function
- **Sequence-Database**
  - Manages up to 5000 MIDI-files with import, export, rename, delete, edit and assign functions
  - Multiple hierarchical category- and acc-button assignment for easy and fast access to each MIDI-file
  - Freezable favorite- or last-used lists for each acc -category
  - Music-finder function with artist, title, genre, tempo and multiple tags
- **Sequence-Control**
  - Volume control with up to 4 master track-controls and 16 single track controls from panel and/or display
  - Part control with 11 variation buttons (3 additional assignable) with preselect function, combined select functions assignable to other panel controls
  - Mute and solo function for each track (also assignable to panel controls)
  - Sync-start, fade-in/out.
  - Tempo wheel & tap-tempo

---

## MULTIMEDIA FILES

---

- **MultiMedia Player**
  - Plays all common multimedia-files, Blue ray disc, audio CDs, DVDs
  - Internal video display with HD, external with full HD
  - Audio lyrics function for MP3 files (also assignable to external displays)
- **MultiMedia Database**
  - Manages up to 1000 multimedia-files with import, export, rename, delete, edit and assign functions
  - Multiple hierarchical category- and acc-button assignment for easy and fast access to each multimedia -file
  - Freezable favorite- or last-used lists for each acc -category
  - Music-finder function with artist, title, genre, tempo and multiple tags
- **MultiMedia Database**
  - Manages up to 1000 multimedia-files with import, export, rename, delete, edit and assign functions
  - Multiple hierarchical category- and acc-button assignment for easy and fast access to each multimedia -file
  - Freezable favorite- or last-used lists for each acc -category
  - Music-finder function with artist, title, genre, tempo and multiple tags

### Advanced Accompaniment (Accompaniment Arranger)

Building on the success of the WERSI OpenArt-Arranger found in our older OAS 7 instruments, the Sonic features an all new Accompaniment editor that allows you to easily edit and create accompaniment styles. You can adjust and amend all style parts, record your own style parts or simply create a new style. WERSI have expanded the style format to allow you even greater musical opportunities within the accompaniment section of the new Sonic. Accompaniments have never sounded so good!

### Audio - Styles (REALDRUMS)

One of the latest WERSI innovations, our new Realdrum technology allows you to not only play with incredible Audio Styles, but you can also create your own Audio Styles by loading new Audio parts (recycle files for example). The Sonic is the only arranger / workstation that will allow you to create and edit Audio Styles.

WERSI pioneered this technology some fifteen years ago and have developed the format to a whole new level with the Sonic operating system. You won't believe your ears when you hear the exception sound quality of the new Audio Drums!

There are 70 completely new Audio Styles exclusive to the WERSI Sonic . (The Sonic includes 130 Audio Styles as standard) These were created in professional sound studios by top European music producers and recording engineers. They used an 11 microphone setup to record the drums, including specialised near field and room microphones to capture true drum ambiance.

We're very proud to introduce the world to the new Realdrum / Audio Style technology and invite you to experience the sound experience of the Sonic Audio Styles!

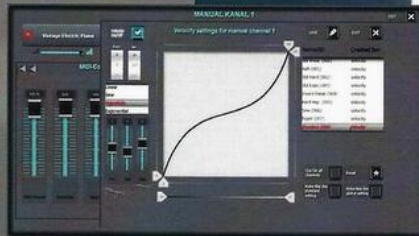




## OVERALL REGISTRATION FEATURES (Total Presets)

The WERSI Sonic allows you to create easy Total Presets (Overall Registrations) as well as Sub-Presets to store every setting of the Sonic.

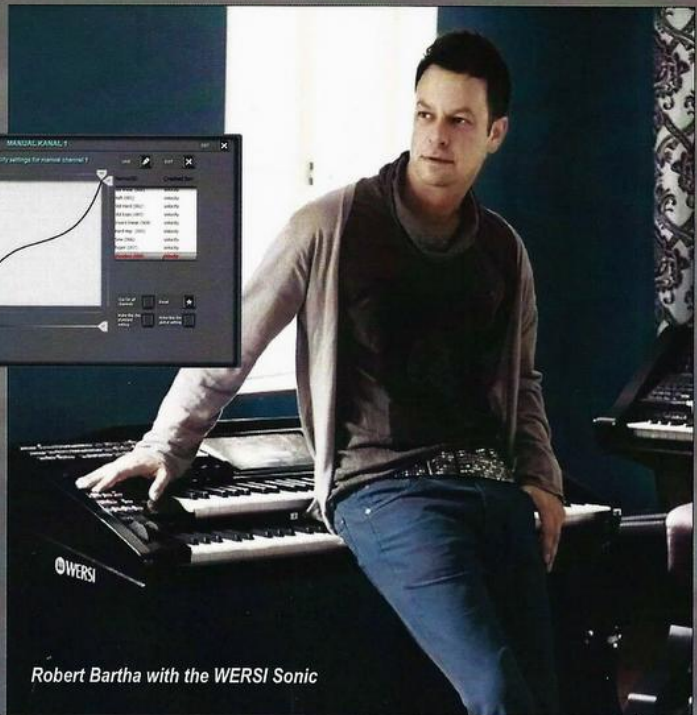
This allows you to instantly recall your favourite settings at the touch of a button, or swipe of the Touch Display.



The Sonic comes pre-loaded with a large amount of Factory Overall Registrations, including professionally setup presets made by world professional stars such as Robert Bartha.

The Overall Registrations allow you to save all parameters from keyboard splits, sounds, accompaniment selection, mixer settings, digital routing, line effects and all other settings available. It's never been easier to create your perfect preset or concert program!

*Saving a Preset is easy with the Sonic! It's extremely easy to choose what options you'd like the Sonic to save to memory and the well laid out new OAX interface allows you to easily navigate around the display!*



Robert Bartha with the WERSI Sonic

- **Total Presets (Overall Registrations)**
  - Can save more 1500 settings as single instrument-registration (sound settings, acc settings, panel settings, IO settings, etc.)
  - More than 15 compact sub-setting-records can be edited/ saved separately and linked to the total preset such as velocity keytracks, input-mixer settings, microphone settings, panel configurations, etc.
  - Each setting comes with 4 different save options (explicit, standard, global or last state)
- **Preset Database**
  - Manages up to 20,000 total-presets and up to 2000 sub-setting-records with import, export, rename, delete, edit and assign functions
  - Music-finder function with artist, title, genre, and multiple tags
- **Preset Control and Edit**
  - All panel controls assignable to various preset settings
  - More than 35 graphical user interfaces for preset and sub-settings edit (such as sound assignment, manual settings, acc-settings, keytrack-edit, mixer-edit, etc.)
  - Sophisticated preset-save control, possibility to assign a save type to each single preset setting

## VST IMPLEMENTATION

- **VST Database**
  - Manages up to 1024 VST-Plugins, in up to 256 VST-configurations (settings including all loaded Plugins, their connections in between and to In-/Outputs, connection- EQs and gains)
- **VST Control**
  - GUI for manipulating the actual VST-configuration
  - Load and import function for plugins
  - Graphical creating and removal of audio connections
  - Single-channel-edit, plug-in- EQs, mixing and mastering tools

Connecting Sound Generators and VSTi to the Master Outputs has never been easier! Using the new 'retro style' routing system, simply plugin or disconnect whatever modules you desire on the new Sonic!

VSTi integration, loading, editing and saving of configurations has never been easier! The new OAX database can manage up to 1024 VST Plugins and host up to 256 VST configurations.

This is a first for any hardware arranger / workstation. A true WERSI innovation.

